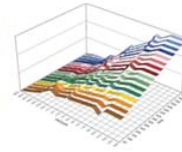




Engine Calibration
1949 E. Deere Ave, Santa Ana, CA 92705
(949) 863-1359 www.splitsec.com

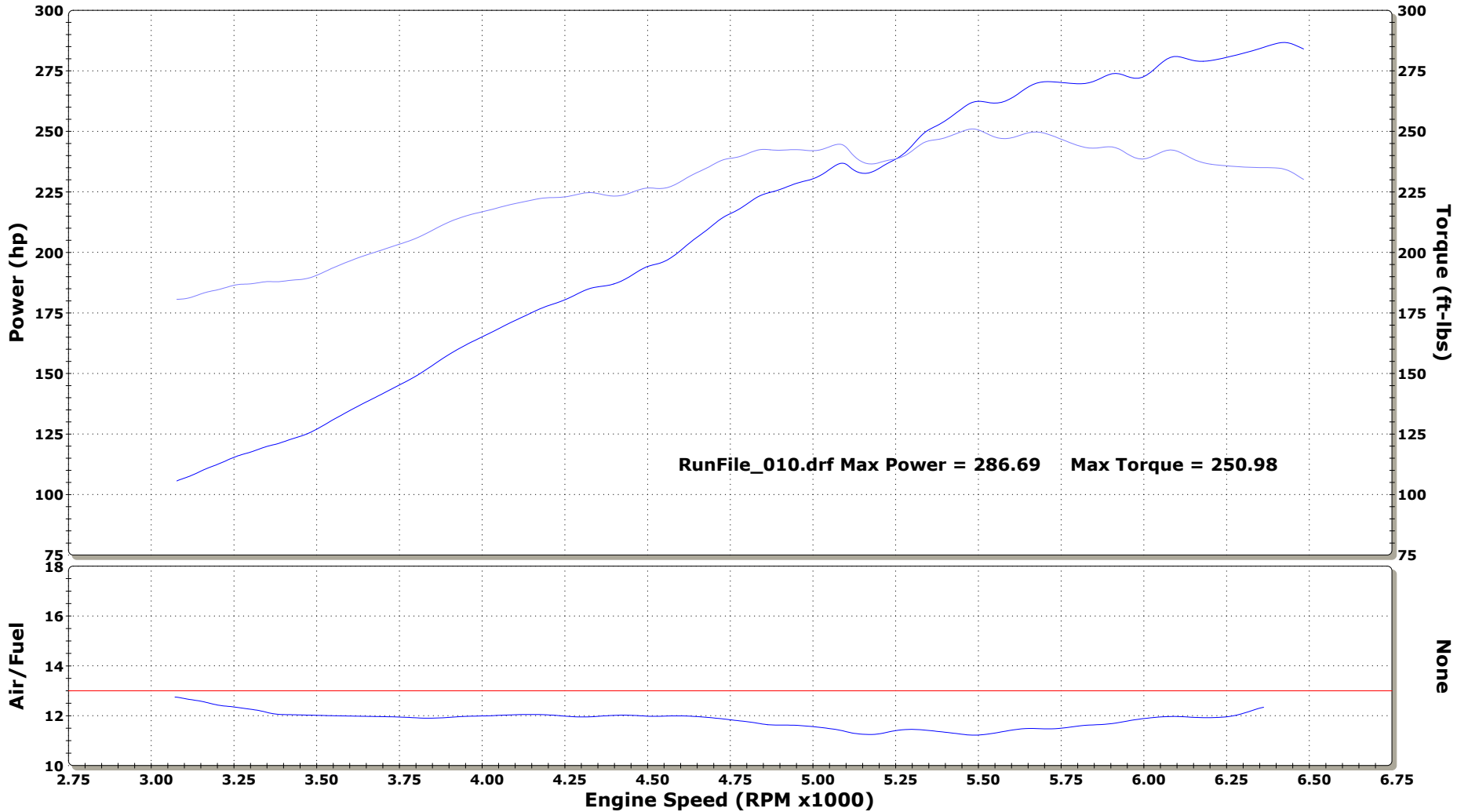


RunFile_010.drf - 3rd gear - Run Conditions: 87.22 °F, 29.89 in-Hg, SAE: 1.00

DYNOJET RESEARCH

CF: SAE Smoothing: 5

Split Second - Santa Ana, CA - 949-863-1359



RunFile_010.drf - 3rd gear - Run Conditions: 87.22 °F, 29.89 in-Hg, SAE: 1.00
Run Type: RO Date: 8/19/2011 4:24:32 PM